



REGULATIUN

16th International Festival of Musical Creativity “Earth Is Our Common Home” April 25-30, 2017 Ekaterinburg

The XVI International Festival of Musical Creativity is held in Yekaterinburg since 1982 with a support of the Governor and the Government of the Sverdlovsk Region. It is the unique noncommercial cultural project which unites youth art creativity of the whole world. During its existence, it has got an extraordinary fame and popularity all over the world. Nowadays, history of the Festival includes 40 countries and 350 creative collectives, 20000 participants. More than 20 thousand children from Russia and many countries of the world have taken part in the Festival during this time.

1. GENERAL REGULATION:

- The International Children’s Music Festival “Earth is our common home” is held in Ekaterinburg since 1982 in order of supporting the development of artistic initiatives of children and teenagers, and creates conditions to meet their needs for self-actualization;
- The International Children’s Music Festival is recognized by UNESCO as an official event in the framework of the World Decade of Cultural Development;
- The Founders of the Festival are the Government of the Sverdlovsk region, the Ministry of Culture of the Sverdlovsk region, Sverdlovsk State Children's Philharmonic Society, Ural-Siberian Federation of associations, centers and clubs of UNESCO;
- The Organizing Committee of the Festival is formed for work on preparation and carrying out of the Festival, its structure includes an Executive management, Arts Council of the Festival.



2. PURPOSES AND OBJECTIVES OF THE FESTIVAL:

- **Competition's purpose is** exchange of creative achievements in various genres of children's musical creativity, development and strengthening of the multilateral international cultural contacts.
- The objectives of the Festival are:**
 - creation of optimal opportunities for identifying creative potential;
 - organization of performance of art programs of creative teams, the formation of artistic aesthetic taste, the improvement of the spiritual culture;
 - concentration of public attention on the problem of preservation of the availability of children's musical creativity, advanced communication features, creating the conditions for informal communication;
 - intensification of the creative process, the creation of joint art projects and the organization of an international creative collaboration;
 - preservation of the historical traditions of national culture, citizenship, the strengthening of friendship and mutual understanding, the development of the youth festival movement.

3. DATES AND PLACE OF THE FESTIVAL:

The 16th International Festival of Musical Creativity "Earth is our common home" will take place from 25 to 30 of April, 2017 in Ekaterininskiy Hall of Sverdlovsk State Children's Philharmonic Society, located at the address: Ekaterinburg, bld. 36, 8 Marta St., and also at the best stages of the city.

The official site of the Sverdlovsk State Children's Philharmonic Society: www.sgdf.ru



4. THE FESTIVAL PROGRAM:

Arrival in Ekaterinburg on April 25, 2017.

April 25, 2017 - Opening Ceremony

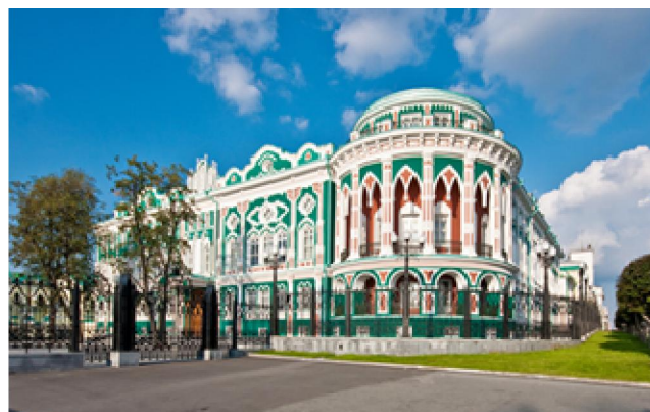
April 26, 2017 – Cultural program, excursions, evening concert of the jury members of the Festival

April 27, 2017 – Music Competition and Award Ceremony

April 28, 2017 – Day of the Urals culture

April 29, 2017 – Gala - concert of the Festival

Departure from Ekaterinburg on April 30, 2017
(up to 12:00 am).



5. CONDITIONS, TERMS AND

PROCEDURE OF THE FESTIVAL:

Participants

In the Competition take part all creative teams (groups), ensembles and soloists- participants of the Festival. All performances are public.

Age of participants

Age requirement for participants **is not more than 21.**

Genres

- choral singing
- instrumental music
- dance art
- folk art

Number of participants

The maximum number of participants together with the artistic director, accompanist and translator should not exceed:

- 15 people for instrumental and folk ensembles;
- 20 people for dance companies;
- 30 people for orchestras and choirs.

Stages of Festival

The Festival takes place in two stages:

- **The first stage - the qualifying round till December 25, 2016 year.**

Those who are wishing to take part in the Festival should send an e-mail: larisa@sgdf.ru, a.pisareva@sgdf.ru, yu.kozyreva@sgdf.ru; a.babushkina@sgdf.ru

1. Countries that have made the team or soloists, address, telephone number, fax;
2. Detail press release indicating the titles of manager, list of participants;
3. Photos of the group with high resolution (at least 1 MGB), for use in printing products;
4. Link of the group's video, timing of performances (should not exceed 20 minutes);
5. Full name of the head of group, accompanist, an interpreter (with photo for registration of accreditation).

At a choice of collectives and soloists for participation **in the first stage** of the Festival the following criteria will be considered: performance art, artistic quality, artistry, emotion, scenic culture, identity color of the country

On admission of the group to participate in the second stage of the festival will be notified no later than on **January 20, 2017**.

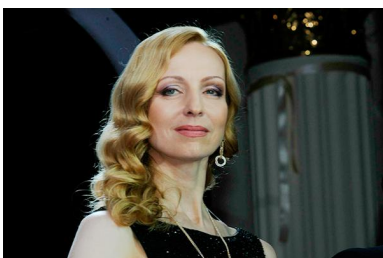
- **The second stage - the Final** will be held on **27 of April 2017** in Ekaterinburg in the context of the Festival.

6. PROGRAM REQUIREMENTS TO COMPETITIVE PROGRAM.

- Nomination for instrumental music, choral singing for the competition must be submitted freely chosen **program consisting of 3 pieces. Duration of each performance should be not more than 10 minutes.**
- Foreign teams preferably perform one piece of Russian or Soviet composer, or arrangement of Russian folk song.
- Russian teams preferably perform one piece of Ural composers.
- The nomination "choreographic art" and folk art is presented by freely chosen **program, consisting of 2 pieces (for choreographic art) and 3 pieces (for folk art). Duration of each performance should be not more than 10 minutes.** Track numbers must be recorded on CD-ROM (CD) or USB flash card and signed (indicate the name of the collective, its directors, country and city).
- The order of competitive performances determined by the Directorate of the Festival. Participants are given time to rehearse on the stage on the day of the competition according to the schedule established by the organizing committee.

7. JURY

Chairman of jury:



Ilze Liepa - Russian ballet dancer, the actress of theatre and cinema. People's artist of Russia, people's artist of Karelia, State prize winner of Russian Federation, the Winner of State theatrical prize "Gold mask".

The members of jury:



Kim Breytburg - composer, producer. Honored art worker of the Russian Federation (2006). Board member of the international union of variety performers. The author of musicals, music for cinema and television who has written more than 600 songs.



Valeria Breytburg - the head teacher of variety and jazz faculty of the Russian Academy of Music of Gnesinyh, musical director of production of musicals in different cities of Russia. Awarded the Order "For a Contribution to Cultural Development of Russia", has the medal "Professional of Russia".



Flavio Sala - guitarist, the winner of International competitions, The winner of the "Audience Choice Award" on the competition "Masters of a Guitar" in San Francisco (the USA, 2004) and a special prize for the best execution of the composition of the Venezuelan author on the competition of Alirio Díaz (Venezuela, 2006). Award winner "Gold Guitar" as the best talent (Alessandria, 2006). Awarded the second prize on the International competition of musical identity of A. Tansman (Poland, 2008).



Elena Sapogova - Honored Artist of Russia, People's Artist of Russia, Honored art worker of the International Slavic academy of Sciences, education, arts and culture.

8. ECONOMIC CONDITIONS DURING THE PERIOD OF THE FESTIVAL:

- The Festival Organizing Committee **not covered** transportation costs to and from Ekaterinburg;
- the Festival Organizing Committee **bears** the expenses connected with the participants' accommodation, meals and transfer
- If the number of the participants or the days of the stay will exceed the specified limitations, all extra expenses **will be borne** by the sending party;
- Participants are required to have health insurance and a certificate of the welfare;

Each participant (including the artistic directors) should pay an admission fee till **February 1, 2017**.

Participant's festival fee is 12 euros.

Bank details

Recipient of payment: Sverdlovsk children's State Philharmony

Address of recipient: Russia, 620014 Yekaterinburg, 8 Marta Street 36

INN 6661005231

Current Acc. 40603978563044904506

Bank of recipient: Joint Stock Company «The Ural Bank for Reconstruction and Development»

Corr. Acc. 400886875400 EUR

SWIFT CODE: COBADEFF

Correspondent bank: COMMERZBANK AG in FRANKFURT/MAIN, GERMANY

9. SUMMARY OF THE COMPETITION

Provides for the award of the following prizes:

- **Grand Prix in the amount of 80 000 rubles**

The general membership of jury defines the absolute winner between all nominations. The title of absolute winner and Grand Prix takes one who attains the highest score.

- First Prize;
- Second Prize;
- Third Prize;
- Audience Award;
- Participants that has received the Grand Prix, the first, second and third prize are the winners of the competition;
- Jury has the right not to award all prizes;
- The Jury awarded Diplomas first, second and third degree to participants of competition;
- The Jury has the right to award participants' letters of thanks.
- Diplomas are awarded the best leaders and accompanists.
- During the competition may be established in addition special awards. All teams - participants receive prizes and souvenirs

10. ADDITIONAL CONDITIONS:

- participation in the Festival includes a compliance with all clauses of this Regulation;
- Russian text is a basis of this Regulation in case of dispute under the Regulation;
- The Festival Organizing Committee has the right to decide all matters not specified in this Regulation, in accordance with the articles of the Russian legislation.

11. DATES TO REMEMBER

Before 25/12/2017: Send in the application forms along with all necessary

Information on E-mail: yu.kozyreva@sgdf.ru , a.pisareva@sgdf.ru, a.babushkina@sgdf.ru .

Before 20/01/2017: The reply of the Organizing committee on your participation in the Festival

Before 31/01/2017: Apply for visa

Before 01/02/2017: Deadline of payment of the Festival fee

Before 01/03/2017: Ask permission for possible changes in your repertoire

Before 01/04/2017: Participants of the Festival need to report a type of transport, train No., a plane flight, date and arrival time and departure.

12. ADDRESS AND CONTACT PHONES OF ORGANIZING COMMITTEE

Sverdlovsk State Children's Philharmonic Society

Address: Russia, 620014, Ekaterinburg, 36, 8 Marta St.

Telephone of Organizing Committee of the Festival:

(343) 376 33 63, 214 98 68: (343) 257-44-70, 214-98-68 fax

E-mail: yu.kozyreva@sgdf.ru , a.pisareva@sgdf.ru , a.babushkina@sgdf.ru

The Regulation about the 16th International Festival of Musical Creativity “Earth Is Our Common Home” is posted on the website of Children's Philharmonic: www.sgdf.ru

Instagram https://www.instagram.com/detskaya_filarmonia.ekb/

Vk.com <https://vk.com/detskayafilarmonia>

Facebook <https://www.facebook.com/SGDFi>

Good luck at the Festival “Earth Is Our Common Home”!

**Directorate of the Festival
“Earth Is Our Common Home”**